



# WHEN IS THE BEST TIME TO HIRE?

**AISSATOU O. SEYDI, D.B.A.**  
ANTAL MANAGING PARTNER

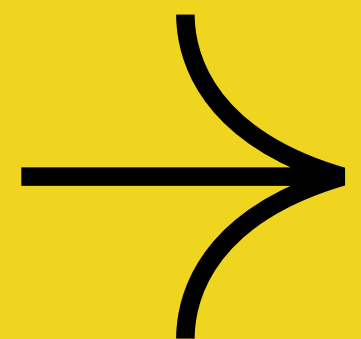


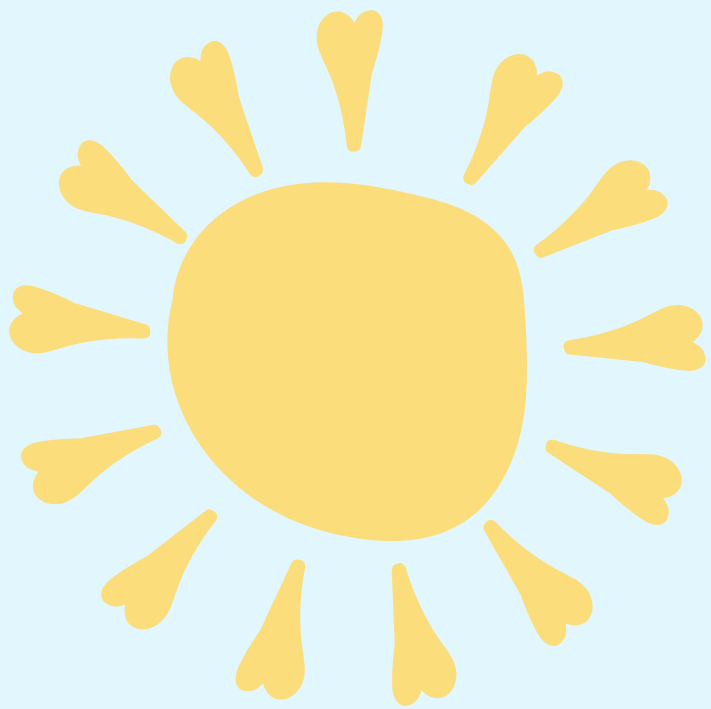


2025  
A

# EARLY IN THE YEAR (JANUARY TO MARCH)

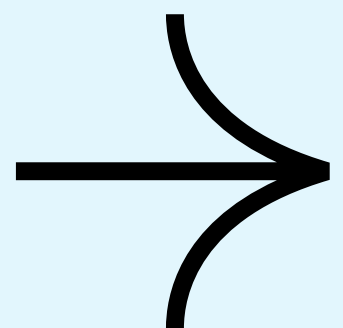
This period is often ideal as budgets are fresh, and **many candidates are motivated to make a change** at the start of a new year.





# SPRING (APRIL TO JUNE)

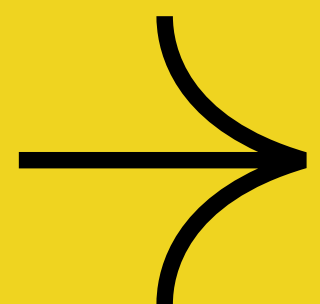
Spring is a good time as many **companies have completed their annual planning, and candidates are looking for new opportunities** before the summer.

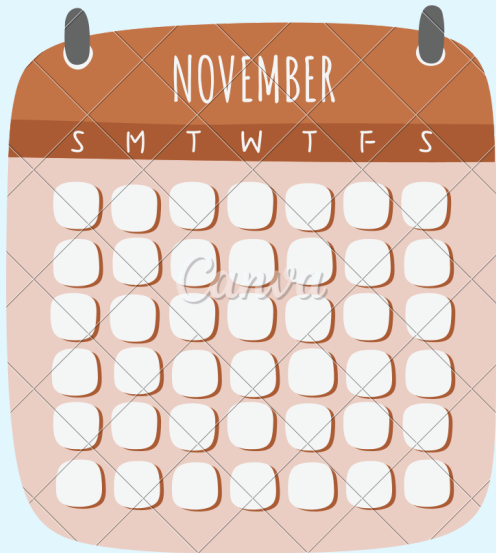




# POST-SUMMER (SEPTEMBER TO OCTOBER)

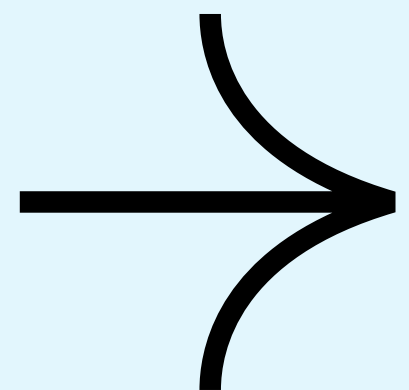
After summer vacations, both companies and candidates are **refocused and ready to engage** in the job market. It's a time of renewed energy and goal-setting.





# BEFORE THE HOLIDAYS (NOVEMBER)

Early November can be a good time to hire **before the year-end rush**. It's a **quieter period** where you can still **attract candidates looking to start fresh in the new year**.

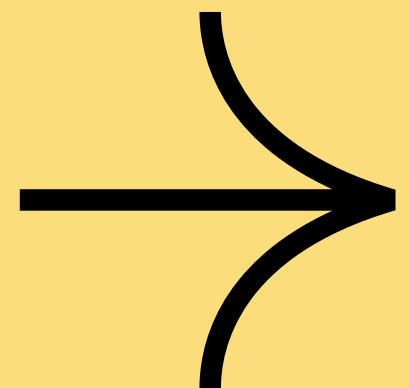




# AVOID

**Peak vacation times (July and August)**  
and  
the **end-of-year holiday season (late December)**

,as these periods see **lower candidate availability and responsiveness.**





**FOLLOW US TO GET  
MORE  
INFORMATION AND  
TIPS LIKE THESE.**

**AISSATOU O.SEYDI, D.B.A  
ANTAL MANAGING PARTNER**

**[HTTPS://WWW.ANTAL.COM/MICROSITE/AMITIE](https://www.antal.com/microsite/amitie)**